

Designed and Produced by



in California
www.retrousb.com

This official seal is your assurance that Nintendo has not reviewed this product. They might even be unhappy about it being made. Always look for this seal when buying games, even though anyone with a scanner or paint program could easily reproduce it.



Introduction

Thank you for selecting the ReproPak. This cart requires a Nintendo NES or clone system.

OBJECT OF THE CART

The ReproPak multi-mapper system makes creating reproduction and homebrew carts easier than ever. No more searching for the right donor cart or following confusing wiring instructions. With a few simple soldering and chip options you can select between four mappers and set mirroring correctly.

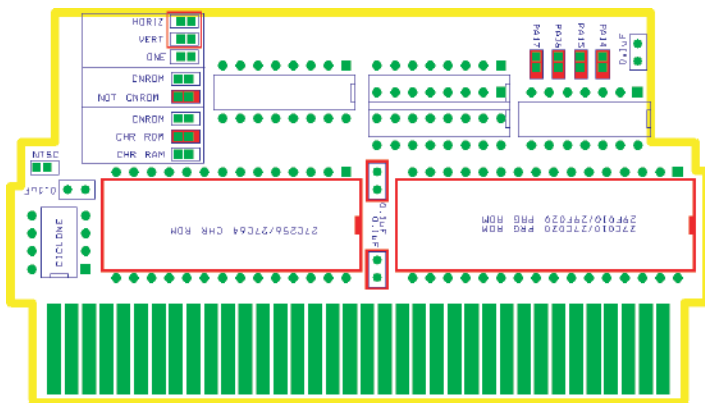
Please read this instruction booklet to ensure proper handling of your new game, and then save the booklet for future reference and eBay sales.

1. Precautions

- 1) This is a high precision cart. It should not be stored in places that are very hot or cold. Never hit or drop it. Never get it wet. Unless you know exactly what you are doing, never take apart.
- 2) Avoid touching the connectors, do not get them wet or dirty. Doing so may stop the cart from working correctly.
- 3) ReproPak contacts can be cleaned with rubbing alcohol and cotton balls. Be careful cleaning the case as some solvents or rubbing alcohol can destroy it.
- 4) Read the instruction booklet thoroughly.

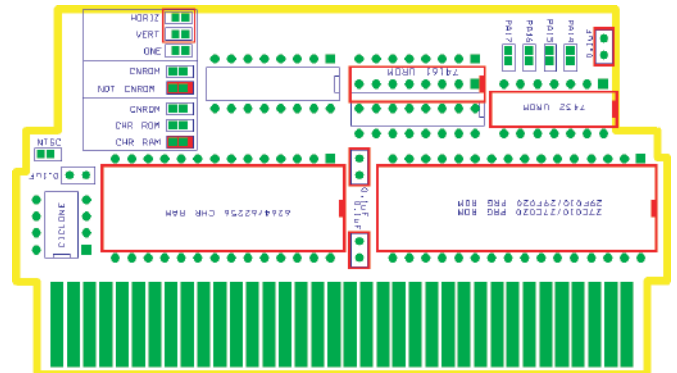
2. iNES Mapper 0 - NROM

- | | |
|---|--|
| For PRG use:
27C010 128KB EPROM
27C020 256KB EPROM
29F010 128KB FLASH
29F020 256KB FLASH | Duplicate all PRG data so it fills the whole chip
Solder tabs "PA14", "PA15", "PA16", "PA17" |
| For CHR use:
27C256 32KB EPROM
27C512 64KB EPROM | Solder either "Horiz" or "Vert" tabs for mirroring
Solder both "NOT CNROM" and "CHR ROM"
Add two 0.1uF capacitors
Optional - Add Ciclon
Optional - Solder "NTSC" to lock the Ciclon to NTSC only |



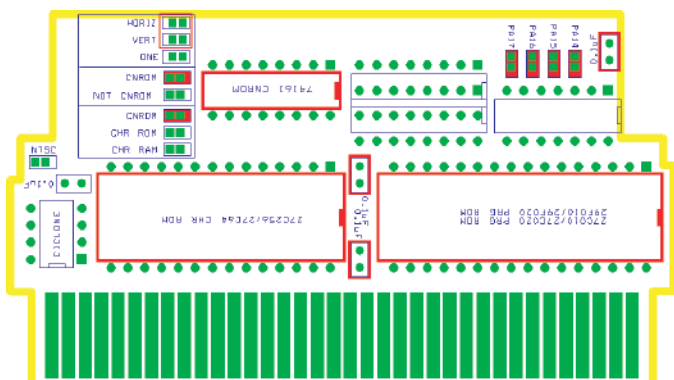
3. iNES Mapper 2 - U*ROM

- | | |
|---|--|
| For PRG use:
27C010 128KB EPROM
27C020 256KB EPROM
29F010 128KB FLASH
29F020 256KB FLASH | Duplicate all PRG and CHR data so it fills the whole chip
Add both mapper chips, covering the UROM names
Do NOT solder tabs "PA14", "PA15", "PA16", "PA17" |
| For CHR use:
6264 8KB SRAM
62256 32KB SRAM | Solder either "Horiz" or "Vert" tabs for mirroring
Solder both "NOT CNROM" and "CHR RAM"
Add three 0.1uF capacitors |
| For Mapper use:
74HC161 and 74HC32
74LS161 and 74LS32 | Optional - Add Ciclon
Optional - Solder "NTSC" to lock the Ciclon to NTSC only |



4. iNES Mapper 3 - CNROM

- | | |
|---|---|
| For PRG use:
27C010 128KB EPROM
27C020 256KB EPROM
29F010 128KB FLASH
29F020 256KB FLASH | Duplicate all PRG and CHR data so it fills the whole chip
Add mapper chip, covering the CNROM name
Solder tabs "PA14", "PA15", "PA16", "PA17" |
| For CHR use:
27C256 32KB EPROM
27C512 64KB EPROM | Solder either "Horiz" or "Vert" tabs for mirroring
Solder both "CNROM" and "CNROM"
Add three 0.1uF capacitors |
| For Mapper use:
74HC161
74LS161 | Optional - Add Ciclon
Optional - Solder "NTSC" to lock the Ciclon to NTSC only |



5. iNES Mapper 7 - A*ROM

- | | |
|---|---|
| For PRG use:
27C010 128KB EPROM
27C020 256KB EPROM
29F010 128KB FLASH
29F020 256KB FLASH | Duplicate all PRG and CHR data so it fills the whole chip
Add mapper chip, covering the AROM name
Solder tab "PA14" |
| For CHR use:
6264 8KB SRAM
62256 32KB SRAM | Do NOT solder tabs "PA15", "PA16", "PA17" |
| For Mapper use:
74HC161
74LS161 | Solder "ONE" tabs for mirroring
Solder both "NOT CNROM" and "CHR RAM"
Add three 0.1uF capacitors
Optional - Add Ciclon
Optional - Solder "NTSC" to lock the Ciclon to NTSC only |

